



# COUNTRY CLUB

UNIFORM CATALOG 2023

newchef®



# COUNTRY CLUB

UNIFORM CATALOG 2023

## **IMAGE IS EVERYTHING.**

At NEWCHEF Fashion we recognize that comfort, style, price, and service are our customer's primary concerns. We continuously strive to find the best fabric for comfort and wearability for the food services within the Resort and Country Club industry, while providing extraordinary service without compromising our customer's needs.

We dedicate ourselves to working with you to achieve the image you are seeking. We prefer to think of ourselves as the 'fashion coordinators' in the industry.

NEWCHEF Fashion is a manufacturer. We offer what many other culinary apparel companies cannot. Whether you're looking to outfit a team of 2 or 1000, we have you covered by providing a myriad of uniform options. As a manufacturer we give our customers the flexibility to obtain a wide spectrum of shelf or custom designed uniforms with the fastest turn around in the industry.

Our line consists of contemporary and traditional apparel, catering to: Back of the House, Front of the House, Banquets, Grounds & Housekeeping.

We provide uniform apparel to some of the finest Country Clubs, Banquet Facilities, Hotels, Resorts, Casinos, Restaurants, University Food Services, Hospitals, Senior Care Facilities, Cruise Lines, and even our military.

"Look Good, Feel Good, Cook Good" – G. Lucien Salama, Founder

**newchef**<sup>®</sup>



# CONTENTS

- Chef Coats 03
- Headwear 30
- Aprons 31
- Polo shirts 37
- Shirts 43
- Vests 45
- Pants 46



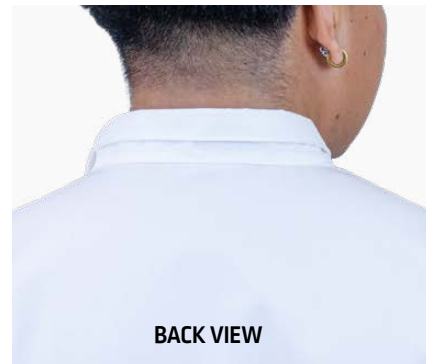
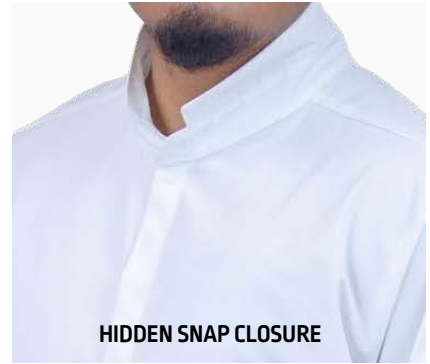




THE PATTERSON CLUB

*Est. 1929*





## NC-QUINCY

White | SKU 145778 65 Polyester/35 Cotton

White | SKU 145904 100% Egyptian Cotton

- Hidden placket center closure
- High collar
- Back yoke
- Slim arm pocket





## NC-COLTON-SS

White/White	SKU 140146
Black/Black	SKU 140147
Charcoal/Charcoal	SKU 145559

- Chef tunic
- Hidden placket
- Inside zipper closure
- Breathable mesh side panels
- Short sleeves
- Arm pocket







## NC-COLETTE-SS

White/White	SKU 140733
Black/Black	SKU 140734
Charcoal/Charcoal	SKU 146092

- Female cut chef coat
- Hidden placket zipper closure
- Mesh side panels
- Short sleeves with thermometer pocket.
- Back neck apron tab



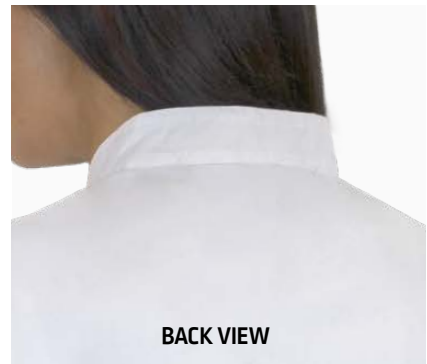


## NC-CLOMER

- White | SKU 145636
- Black | SKU 145811
- Charcoal | SKU 145812

- Hidden placket snap closure
- 3/4 roll up sleeves with tab
- Accent trim on collar & down front
- Left chest welt pocket
- Arm pocket with thermometer divider

**FUNCTIONAL &  
HIGH-QUALITY**



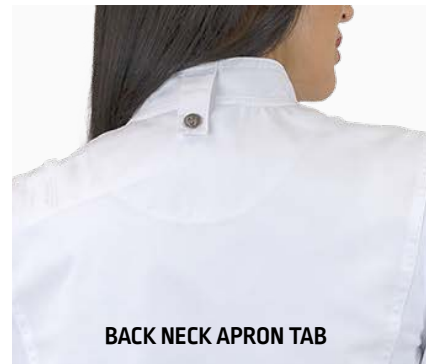
## NC-1002PRINCESSWHT-SS

White | SKU 146099

- 65/35% poly/cotton
- Ladies female cut
- 12 cloth covered button closure
- Short Sleeves
- Cell Phone Arm Pocket
- Back Style lines







## NC-NORMA

White | SKU 144929

- 65% polyester 35% cotton
- Ladies tailored fit
- Soft finish
- Ladies slim cut chef coat
- Hidden placket zipper closure
- Breathable mesh side panels
- Short sleeves
- Back neck apron tab
- Arm pocket





**HIDDEN SNAP CLOSURE**

# NC-LONDON

\*Available in Short Sleeve

White | SKU 124350  
Black | SKU 135325

White | SKU 145803  
Black | SKU 145408

- Chef style tunic
- Hidden placket snap closure
- Front & back mesh panels
- Long sleeves with cuff
- Roll on sleeve with snap on tab
- Arm pocket







## THE NEWEST LOOK

### NC-EMERIC-SS

White | **SKU 145578** 100% Egyptian cotton. Soft finish.

White | **SKU 145774** 65% Polyester 35% cotton. Soft finish.

- Male chef coat
- Hidden placket snap center closure
- Short sleeves
- Slim arm pocket





## MODERN & PRACTICAL LOOK

### NC-EDMEE

White

| SKU 145771 65% Polyester 35% cotton. Soft finish.

White

| SKU 145579 Egyptian cotton. Soft finish.

- Female chef coat
- Hidden placket closure
- Long sleeve with cuff
- Slim arm pocket
- Accent trim around collar, cuff & down front
- Side slits







ARM POCKET

## NC-MESSI

White | SKU 145882

65/35 Poly/Cotton Sleeves 100% Poly mesh

- Premium style chef coat
- Mesh raglan sleeves with cuff
- Hidden placket snap center closure
- Side slits
- Arm pocket



MESH FABRIC



CENTER HIDDEN SNAP CLOSURE



WELT ARM POCKET



BACK VIEW

## NC-PIETRO

White

SKU 145825

Black

SKU 145826

- Male chef coat
- Center hidden placket snap closure
- Slim overlap collar
- Long sleeves with cuff
- Welt arm pocket







## NC-VINCENZO

White | SKU 145788 65 Polyester/35 Cotton

White | SKU 145789 60 Polyester/40 Cotton

- Hidden placket snap closure
- High collar diagonal tunic
- Back yoke
- Slim arm pocket





## NC-GINO-HP-LS

White

SKU 145346

Black

SKU 145805

- Male chef coat
- Roll up sleeves with snap on tab
- No cuffs
- Hidden placket snap closure
- Left chest welt pocket
- Trim accent on collar, cuffs & down front

## CLEAN AND CLASSIC





BACK ACTION PLEAT WITH MESH INSERT



CONTRAST BUTTON

## NC-CLAYTON *\*Ladies option NC-CLARYSSA*

White/Grey | SKU 136782

White/White | SKU 146067

White/Black | SKU 136635

- Slim fit asymmetrical chef coat
- Hidden placket snap closure
- Contrast accents
- Back action pleat with mesh insert
- Short sleeves with contrast button tab accent





## NC-EVANDER

White | SKU 145668

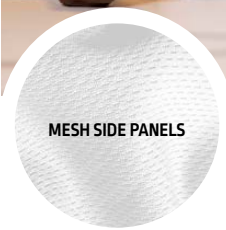
Black | SKU 145807

Charcoal | SKU 145808

- Unisex slim coat
- Hidden placket snap closure
- Left chest welt pocket
- Long Sleeves with Cuff
- Back Yoke







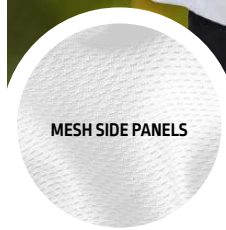
MESH SIDE PANELS

## NC-PLYMOUTH

White | SKU 135323  
Black | SKU 135689

- Diagonally apposed collar
- Matte snap button closure
- Short sleeves
- Accent trim on collar, sleeve, & down front
- Mesh side panels
- Arm pocket

\*Available in cloth covered buttons

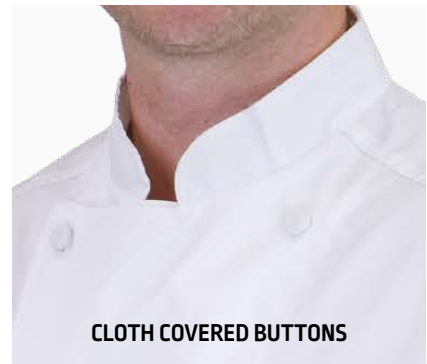


MESH SIDE PANELS

## NC-PLYMOUTH-LS-HP

White | SKU 145820  
Black | SKU 145821

- Diagonally apposed collar
- Hidden placket snap closure
- Long sleeves with cuff
- Accent trim on collar, sleeve, & down front
- Mesh side panels
- Arm pocket



## NC-ATLANTA

\*Available in Long Sleeve

White | SKU 128256

White | SKU 144288

Black | SKU 128257

Black | SKU 144287

# THE SIMPLE THINGS EVERYONE MUST HAVE

- 65/35 white poly/cotton lightweight fabric
- Action pleat in the back with 100% SPORTEK white mesh insert
- Short Sleeves
- 10 Matching cloth covered button closure
- VIP angled welt left chest pocket
- Arm cell phone pocket with thermometer divider





HAND ROLLED BUTTONS



LIGHT GREY TRIM CONTRAST

## NC-PIERRE

- White/Grey | **SKU 146119** 65/35 white poly/cotton
- White/White | **SKU 146124** 65/35 white poly/cotton
- White/White | **SKU 144668** Egyptian cotton

- Soft finish
- Chef coat
- Center closure with hand rolled button
- Left chest welt pocket
- Contrast trim

Numeric  
sizing

SLIM CUT



## NC-PARIS-HR-VIP

White 100% Egyptian cotton  
| SKU 133723

- Long sleeves
- 10 Hand rolled button closure
- VIP angled welt chest pocket
- Under arm air vents
- Double breasted
- Slim cut
- Arm pocket with thermometer divider



HAND ROLLED BUTTONS



AVAILABLE WITH:  
CLOTH COVERED BUTTONS  
SKU 134294





## NC-PASCUALA



White/Light grey | **SKU 130690**

White/White | **SKU 131154**

- 65% polyester 35% cotton
- Ladies cut chef coat
- Roll up sleeves with tab
- Center back action pleat
- Under arm vents
- Left chest patch pocket
- Silver matte snap button closure

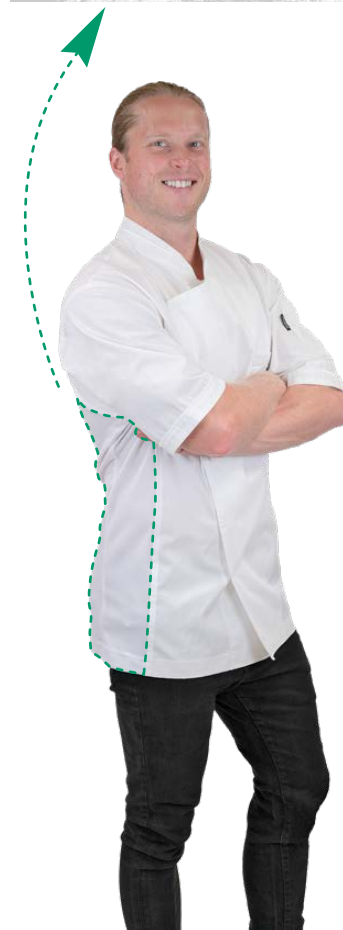
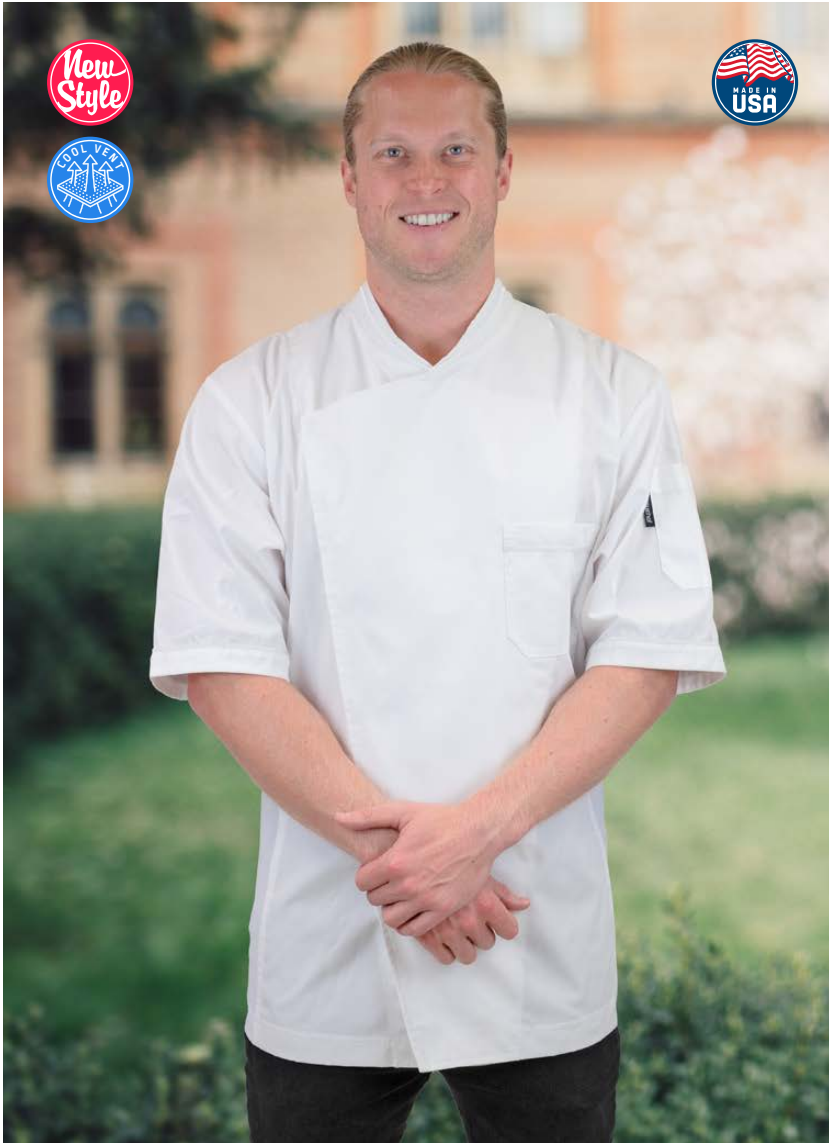
## NC-PASCAL



White/Light grey | **SKU 130675**

White/White | **SKU 146123**

- 65/35 polyester/cotton fabric
- Left chest pocket
- Silver matte snap button closure
- Roll up sleeves with snap on tab
- Left chest pocket
- Center back action pleat
- Arm pocket with thermometer divider
- Underarm vents
- No cuffs



## NC-PAOLO-HP

White | SKU 145809

Black | SKU 145810

- Hidden placket snap closure
- Short sleeves with trim accent
- Cross over flap
- Left chest pocket
- Mesh side panels





## NC-CECIL

- White/White | SKU 135082
- White/LTGrey | SKU 135083
- Black/Black | SKU 140017

- Ladies chef coat
- Matte snap button closure
- Breathable side mesh panels
- Arm pocket
- Side slits





## NC-CYRIL

White/White | SKU 135077

White/LTGrey | SKU 135078

Black/Black | SKU 140144

- Male chef coat
- Matte snap button closure
- Breathable side mesh panels
- Short sleeves
- Arm pocket





## NC-1001

Black

| SKU 105866

White

| SKU 108941

- 65/35 Poly/cotton fabric
- Long sleeves
- Diagonally apposed collar
- 8 Matching knot button closure
- Arm cell phone pocket with thermometer divider

## NC-1001CLRCP-8-SS

White

| SKU 118620

- 65/35 white poly/cotton twill fabric
- Short sleeves
- 8 Clear plastic button closure
- Left chest patch pocket
- Double breasted
- Drop shoulder
- Arm cell phone pocket with thermometer divider



## NC-1001LCC

White | SKU 112067

Black | SKU 112855

- Ladies chef coat
- 65/35 poly/cotton twill
- Cloth covered buttons
- XLarge arm pocket with thermometer divider
- Full cut
- Double breasted
- Side slits
- 8 Cloth covered button closure

## NC-1001CC-SS

White | SKU 113787

Black | SKU 113788

- Chef coat
- Short sleeves
- 65/35 poly/cotton twill
- Cloth covered buttons
- XLarge arm pocket with thermometer divider
- Full cut
- Double breasted
- 8 Cloth covered button closure





## NC-SS3100

HAT | SKU 145203

- Baseball cap
- Polyester mesh back
- Contrast stitching
- 100% cotton twill



## NC-MADDOX

APRON | SKU 145205

- Bib apron
- Left chest pocket
- Two lower patch pockets
- Adjustable neck strap
- Dimensions 30 1/2" W x 34" L



The Country Club of Virginia



**NC-1008G**

**Black** | SKU 108946

Baseball cap



FRONT VIEW

BACK VIEW

**NC-1009BH-OS**

65/35 Black poly/cotton blend | Elastic on back | One size fits all

White	Black	Pinstripe	Royal	Olive drab	Charcoal	Red
119331	119330	119248	119344	138857	119960	119268



**NC-GATSBY**

**Black** | SKU 108945

Gatsby cap



FRONT VIEW

BACK VIEW

**NC-1009BH-3**

65/35 Poly/Cotton fabric | Velcro closure on back | One size fits all

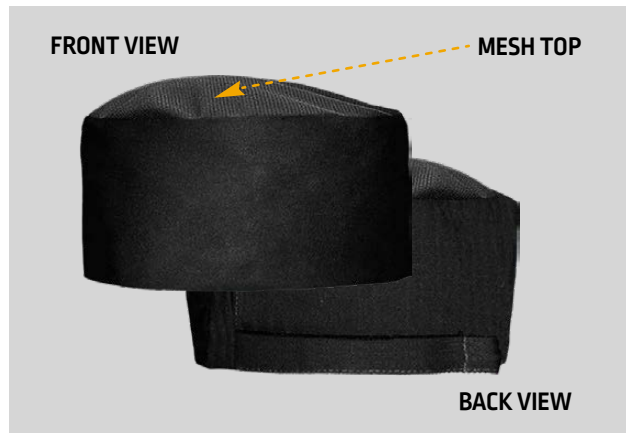
White	Black
122589	113542



**NC-10NWCH**

**White** | SKU 108049

10" Chef Hat | Case of 50 Pieces



FRONT VIEW

MESH TOP

BACK VIEW

**NC-1009BH-3-MSHTP**

**Black** | SKU 126914

65/35 Poly/Cotton fabric | Mesh fabric on top | Velcro closure on back | One size fits all





## NC-PARRY

 Navy/Grey | SKU 140800

Bib apron | Two lower waist pockets | Center chest pocket with top angled thermometer pocket | Silver square hardware on neck strap with metal slider | Rivets at top corners of pockets



## NC-EVAN-BH


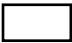



 Black/Rust | SKU 136483

**\*BIG & TALL OPTION 38" W x 43"L NC-IVAN | SKU 145862**

Bib apron | Grommets at top on both sides | Adjustable neck slider | Top left chest pocket with pen divider & contrast edge trim | Lower front divided pocket with squared bottom | Contrast neck strap & ties | Contrast stitching | D-ring for towel on right side of lower pocket | 30 1/2" w x 34 1/2" l


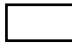





## NC-LORENT

	Black   <b>SKU 143629</b>
	White   <b>SKU 145246</b>
	Charcoal   <b>SKU 145248</b>
	Black & white pinstripe   <b>SKU 145249</b>
	Navy   <b>SKU 145250</b>

Self fabric ties | No pockets | Adjustable neck slider | Measurements 38" W X 43"

## NC-LAWRENCE

	Black   <b>SKU 145134</b>
	White   <b>SKU 145133</b>
	Charcoal   <b>SKU 141335</b>
	Navy   <b>SKU 145135</b>
	Heather grey   <b>SKU 145861</b>

65/35 poly/cotton blend fabric in choice of color | Front lower center divided pocket | Left chest pen pocket | Adjustable twill tape neck strap with metal slider | Measurements 38" W x 40" L | Extra long twill tape ties 42"





## NC-F24

-  Black | **SKU 106355**
-  White | **SKU 106365**

Long bistro apron | Single pocket on right side and pen divider | Size: 31" length

## NC-4003SM

-  Black | **SKU 107786**
-  White | **SKU 107785**

Long bistro apron | Front divided pocket | Size: 27" W x 32" L





## NC-4004

-  Black | **SKU 111136**
-  White | **SKU 107068**

Long 4 way apron | Size: 34" W x 28" L









## NC-F28

-  Black | **SKU 108648**
-  White | **SKU 109876**

Half bistro apron | Easy care 65/35 white poly cotton fabric | Front divided pockets | Size: 19" L x 28" W







## NC-F8

	Black   <b>SKU 105948</b>
	White   <b>SKU 105950</b>
	Kelly Green   <b>SKU 110624</b>
	Hunter Green   <b>SKU 109177</b>
	Charcoal   <b>SKU 113845</b>
	Navy   <b>SKU 110140</b>

Extra-long bib apron for added protection | Center-divided patch pocket and two-piece slider neck adjustment | 65/35 black poly/cotton twill | Size: 34" L x 23" W | Apron ties are 36" inches in length | Fabric: 75 oz. ultra-durable poly-cotton twill | Protected by ProDura Soil Release finish.

## NC-1430

	Black   <b>SKU 108601</b>
	White   <b>SKU 107169</b>
	Charcoal   <b>SKU 112238</b>
	Navy   <b>SKU 108040</b>

100% spun polyester fabric | Bib apron | No adjustable neck slider | No pockets | Size: 28" W x 33" L



[LEFT SIDE]

## NC-1790

- White | SKU 107041
- Black | SKU 109651

100% spun polyester fabric | Short 4 way apron  
| Size: 18" L x 30" W when folded

[RIGHT SIDE]

## NC-2134

- White | SKU 107042
- Black | SKU 107724



100% spun polyester fabric | Bistro apron | Measures 36" L x 30" W





## NC-ALS17914

-  BLACK FROST | **SKU 145924**
-  FRONTIER FROST | **SKU 145925**
-  POLAR FROST | **SKU 145926**

**Material:**

89% polyester, 11% Spandex, 180 gsm | Four-way stretch fabric  
| Rich, cotton-like feel | 40+ UV protection

**Feature:**

Stylized two-button placket | Buttons with side 'Spyder' etching  
| Threaded grommets to improve ventilation | Back dart for a better fit | Side vents for added mobility and ventilation | Iconic rubberized Spyder bug logo at left sleeve | Rubberized Spyder wordmark at center back | Deco Eligible

## NC-ALS17915

-  BLACK FROST | **SKU 145942**
-  FRONTIER FROST | **SKU 145943**
-  POLAR FROST | **SKU 145944**

**Material:**

89% polyester, 11% Spandex, 180 gsm | Four-way stretch fabric  
| Rich, cotton-like feel | 40+ UV protection

**Feature:**

Relaxed front placket | Threaded grommets to improve ventilation | Stylized back seams | Side vents for added mobility and ventilation | Iconic rubberized Spyder bug logo at back neck | Rubberized Spyder wordmark at right side | Deco Eligible



## NC-AL538930

-  BRT COBLT / HG RS | **SKU 145921**
-  NVY BLZR / QT SH | **SKU 145922**
-  PUMA BLK / HG RS | **SKU 145923**

**Material:**


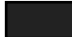

94% recycled polyester, 6% elastane  
| DryCELL moisture-wicking performance | UV resistant 50+ fabric

**Feature:**

4-way stretch for ease of movement | Two-button placket | Deco Eligible



## NC-AL596802

-  PEACOCK | **SKU 146058**
-  PUMA BLACK | **SKU 146059**
-  QUIET SHADE | **SKU 146060**

**Material:**

100% polyester | Space-dyed heather fabric | Moisture-wicking | Mechanical stretch | Space dyed heather fabric

**Feature:**

Ultra-lightweight | V-neck | Silicone Puma Cat logo on left sleeve | Deco Eligible



## NC-AL599120

-  BRIGHT COBALT | SKU 145927
-  BRIGHT WHITE | SKU 145928
-  HIGH RISE | SKU 145929
-  HOT CORAL | SKU 145930
-  NAVY BLAZER | SKU 145931



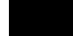
**Material:**

100% polyester interlock | DryCELL moisture-wicking performance  
| UV resistant 50+ fabric

**Feature:**

4-way stretch for ease of movement | Three-button placket | Cat logo on left sleeve | Deco Eligible

## NC-AL532989

-  BRIGHT WHITE | SKU 145945
-  NAVY BLAZER | SKU 145946
-  PUMA BLACK | SKU 145947

**Material:**

100% polyester interlock | DryCELL moisture-wicking performance  
| UV resistant 50+ fabric






**Feature:**

4-way stretch for ease of movement | Five-button placket | Cat logo on left hem | Deco Eligible





## NC-ALN17922

	COOL MINT   <b>SKU 145953</b>
	FADED NAVY   <b>SKU 145954</b>
	ONYX   <b>SKU 145955</b>
	SEA MIST   <b>SKU 145956</b>
	SUNSET PINK   <b>SKU 145957</b>





**Material:**

89% polyester, 11% Spandex, 180 gsm | 40+ UV protection

**Feature:**

Two-Button hidden placket with stripe tape detail | Nautica branded rubber buttons | Micro locker loop | Contrast interior facing | Side vents | Iconic J-class screen print at back neck | Nautica branding at sleeve | Deco Eligible

## NC-ALN17923

	COOL MINT   <b>SKU 145948</b>
	FADED NAVY   <b>SKU 145949</b>
	ONYX   <b>SKU 145950</b>
	SEA MIST   <b>SKU 145951</b>
	SUNSET PINK   <b>SKU 145952</b>

**Material:**






89% polyester, 11% Spandex, 180 gsm | 40+ UV protection

**Feature:**

Two-button hidden placket with stripe tape detail | Nautica branded rubber buttons | Micro locker loop | Contrast interior facing | Side vents | Iconic J-class screen print at back neck | Nautica branding at sleeve | Deco Eligible



## NC-AL1370399

	BLACK/WHT_001   <b>SKU 145974</b>
	RED/WHITE_600   <b>SKU 145975</b>
	ROYAL/WHITE_400   <b>SKU 145976</b>
	MD NAVY/WH_410   <b>SKU 145977</b>
	WHT/MD GRY_100   <b>SKU 145978</b>






**Material:**

100% polyester | Material wicks sweat and dries quickly | Textured fabric that's soft, light and breathable | Anti-odor technology prevents the growth of odor-causing microbes | Material wicks sweat and dries fast

**Feature:**

Textured fabric that's soft, light and breathable | 3-button placket | Self-fabric collar | Deco Eligible

## NC-AL1370431

	BLACK/WHT_001   <b>SKU 145979</b>
	RED/WHITE_600   <b>SKU 145980</b>
	ROYAL/WHITE_600   <b>SKU 145981</b>
	MD NAVY/WH_410   <b>SKU 145982</b>
	WHT/MD GRY_100   <b>SKU 145983</b>

**Material:**






100% polyester | Material wicks sweat and dries quickly | Textured fabric that's soft, light and breathable | Anti-odor technology prevents the growth of odor-causing microbes | Material wicks sweat and dries fast

**Feature:**

Textured fabric that's soft, light and breathable | 3-button placket | Self-fabric collar | Deco Eligible



## NC-ALS16532

	BLACK   <b>SKU 145932</b>
	FRONTIER   <b>SKU 145933</b>
	LIME   <b>SKU 145934</b>
	POLAR   <b>SKU 145935</b>
	WHITE   <b>SKU 145936</b>






**Material:**

100% polyester textured mesh 140 gsm | Spyder branded 3mm buttons

**Feature:**

Heat-seal tape set into shoulder seams | Side vents for comfort | Iconic Spyder bug logo on left sleeve | Spyder branding on back right shoulder | Modern fit | Deco Eligible

## NC-ALS16519

	BLACK   <b>SKU 145937</b>
	FRONTIER   <b>SKU 145938</b>
	LIME   <b>SKU 145939</b>
	POLAR   <b>SKU 145940</b>
	WHITE   <b>SKU 145941</b>

**Material:**

100% polyester textured mesh 140 gsm

**Feature:**

Stylized open placket with heat-seal tape set into should seams | Iconic Spyder bug logo on wearer's left sleeve | Spyder branding on back neckline | Side vents and drop tail hem for comfort | Angled princess seams | Modern fit | Deco Eligible





## NC-ED5290

Black | SKU 115353

White | SKU 112213

- 65% Polyester/35% Cotton; 3.1/3.5 oz.wt.
- Performance broadcloth café shirt
- Café collar with covered placket
- Long sleeve and no pocket
- Two-button adjustable cuff
- Straight back yoke seam
- Industrial launder or machine washable
- Sizes: XXS - 3XL
- Men's companion is 1290

## NC-ED1290

Black | SKU 115666

White | SKU 115664

- 65% Polyester/35% Cotton; 3.1/3.5 oz.wt.
- Performance broadcloth café shirt
- Café collar with covered placket
- Long sleeve and no pocket
- Two-button adjustable cuff
- Straight back yoke seam
- Industrial launder or machine washable
- Men's Sizes: Regular; S - 3X
- Talls; L - 6XL
- Ladies' companion is 5290



## NC-ED1354

- White | SKU 141761
- Black | SKU 141764
- Navy | SKU 146131

- 65% Polyester/35% Cotton
- Traditional fit
- Performance broadcloth dress shirt
- Point collar with permanent stays
- Long sleeve with two-button, adjustable cuff
- Left chest pocket, Back box pleat
- Wrinkle resistant
- Industrial launder or machine washable
- Men's Sizes: Regular, S - 3XL

## NC-ED5354

- White | SKU 141767
- Black | SKU 141624
- Navy | SKU 146132

- 65% Polyester/35% Cotton
- Performance broadcloth dress shirt
- Point collar with permanent stays
- Long sleeve with left chest pocket (white only)
- Two-button adjustable cuff, straight back yoke seam
- Wrinkle resistant and soil release
- Industrial launder or machine wash
- Ladies' Sizes: XXS - 4XL



### Ladies' Essential Vest

## NC-ED7490

**Burgundy** | SKU 133155

**Black** | SKU 146128

**Navy** | SKU 130441

- 100% Polyester; 6.3 oz. – Textured Weave
- V-neck vest with matching button placket
- Two functional welt pockets
- 4 inside lining pockets
- Self-fabric back
- Fully Lined
- Industrial launder or machine washable
- Ladies' Sizes: XS-3XL

### Men's Essential Vest

## NC-ED4490

**Burgundy** | SKU 120246

**Black** | SKU 133154

**Navy** | SKU 130438

- 100% Polyester; 6.3 oz.- Textured Weave
- Traditional fit
- V-neck vest with matching button placket
- Two functional welt pockets
- 4 inside lining pockets
- Self-fabric back, Fully lined.
- Industrial launder or machine washable
- Men's Sizes: Regular, S - 5XL





Ladies' pant

## NC-ED8537

Black	SKU 143039
Navy	SKU 143154
Tan	SKU 146129
Coal	SKU 144948

- 65% Polyester/35% Cotton; 7.5/8.0 oz.wt.
- Casual chino blend pant
- Flat front, button closure and brass zipper
- Two front and one back pocket
- Moisture wicking fabric
- Soil and wrinkle resistant
- Industrial launder or machine washable
- Ladies' Sizes: 00-32



Men's pant

## NC-ED2537

Black	SKU 142498
Navy	SKU 143153
Tan	SKU 143320
Coal	SKU 144947

- 65% Polyester/35% Cotton; 7.5/8.0 oz.wt.
- Casual chino blend pant
- Flat front, button closure and brass zipper
- Two front and back pockets
- Moisture wicking fabric
- Soil and wrinkle resistant
- Industrial launder or machine washable
- Men's Sizes: 28 - 60

newchef®

*look good feel good cook good*

# COUNTRY CLUB

UNIFORM CATALOG 2023

NEWCHEF Fashion Inc. 3223 East 46th Street, Los Angeles, CA., 90058  
1.800.NEWCHEF (639.2433)

[www.newchef.com](http://www.newchef.com)



THE LANDINGS  
SAVANNAH, GEORGIA

Front page: "The Landings Club"

**CUSTOM**  
MANUFACTURING